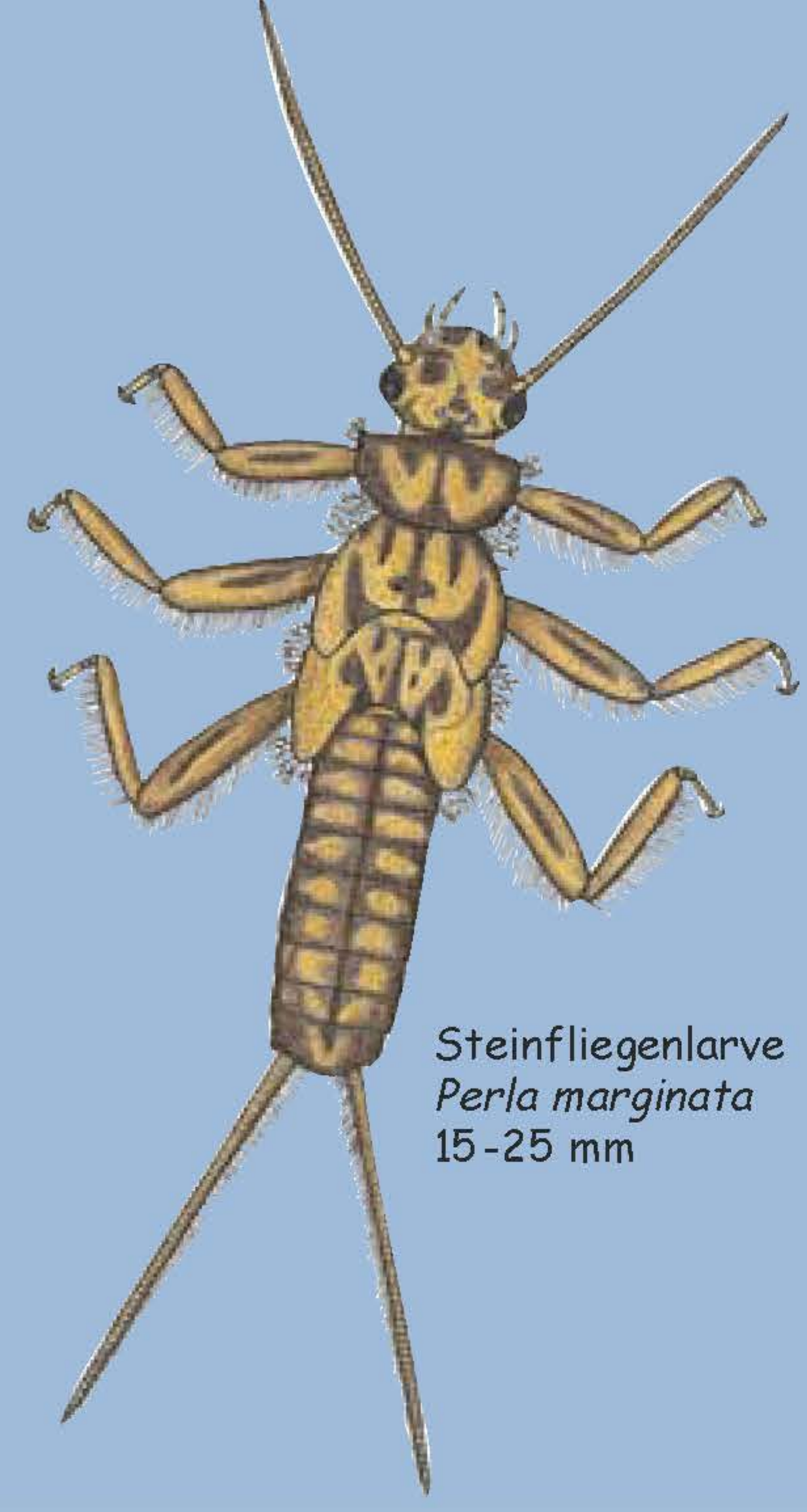


1



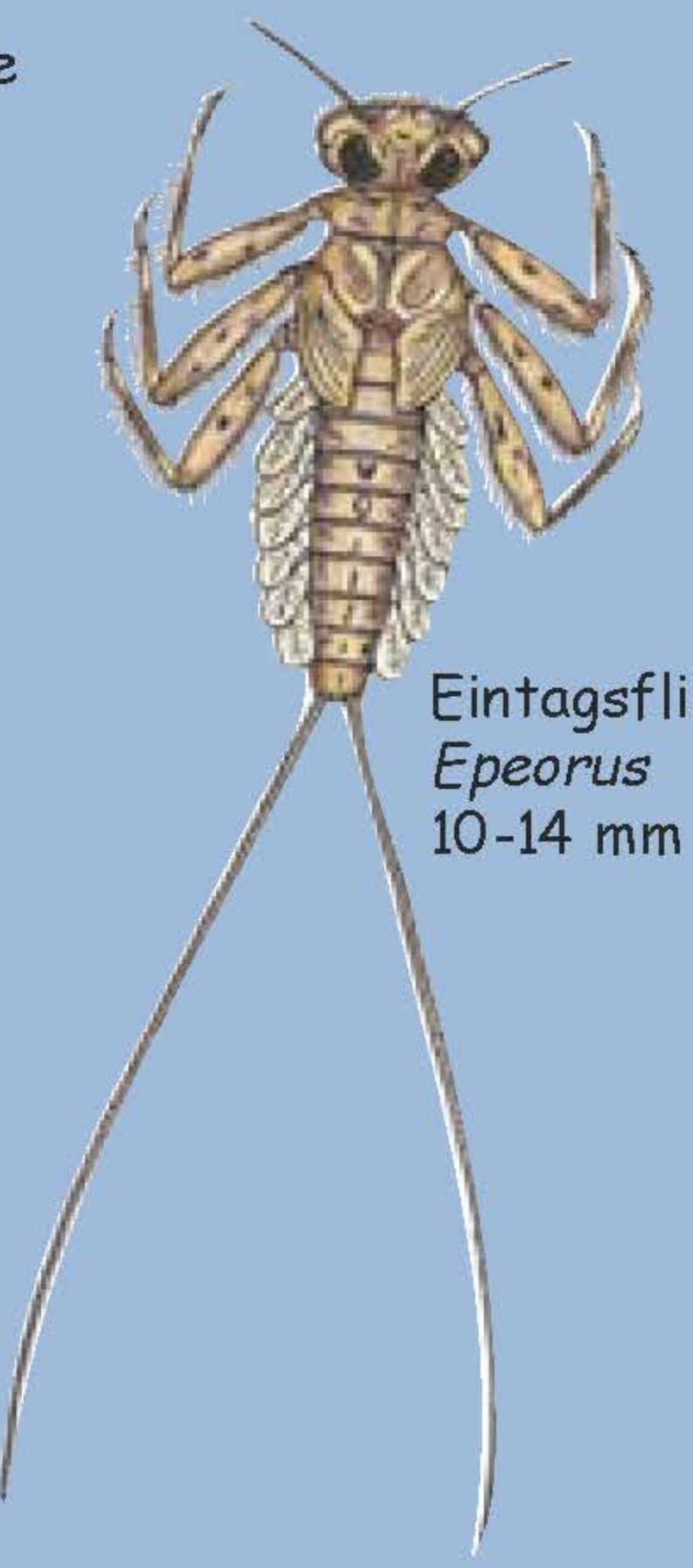
Steinfliegenlarve  
*Perla marginata*  
15-25 mm



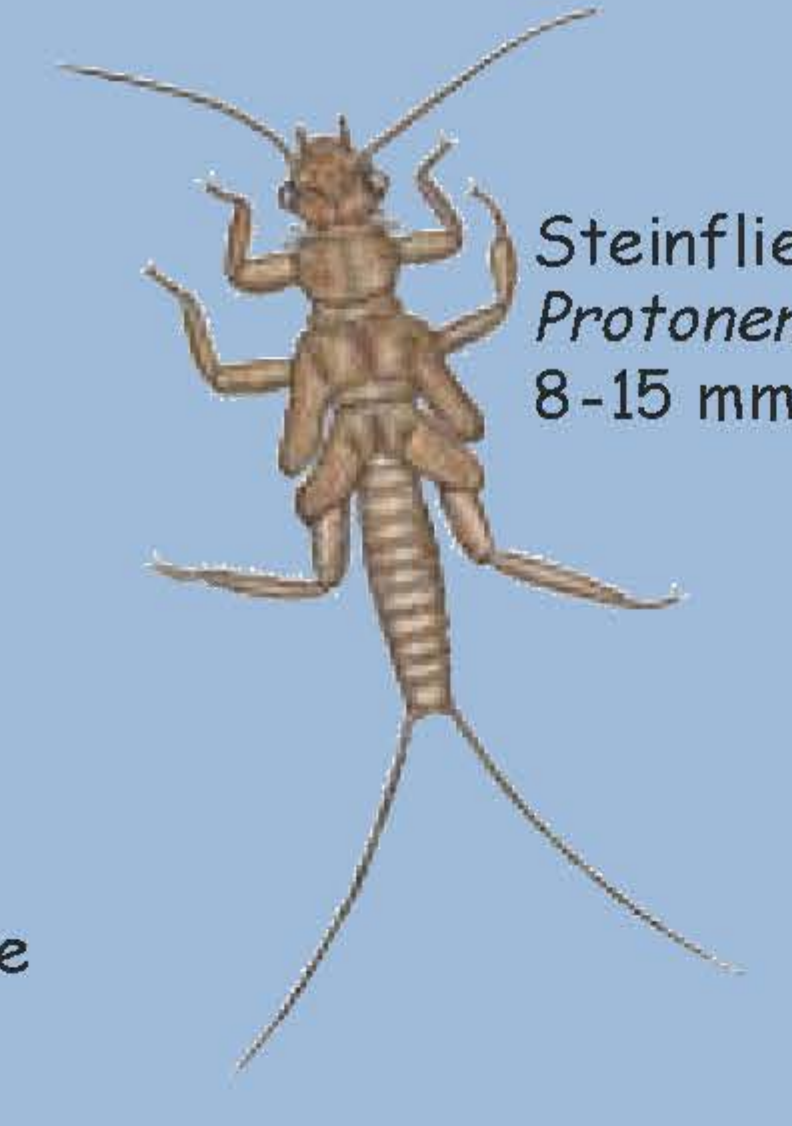
Köcherfliegenlarve  
*Crunoecia*  
8 mm



Lidmückenlarve  
*Liponeura*  
6-9 mm



Eintagsfliegenlarve  
*Epeorus*  
10-14 mm



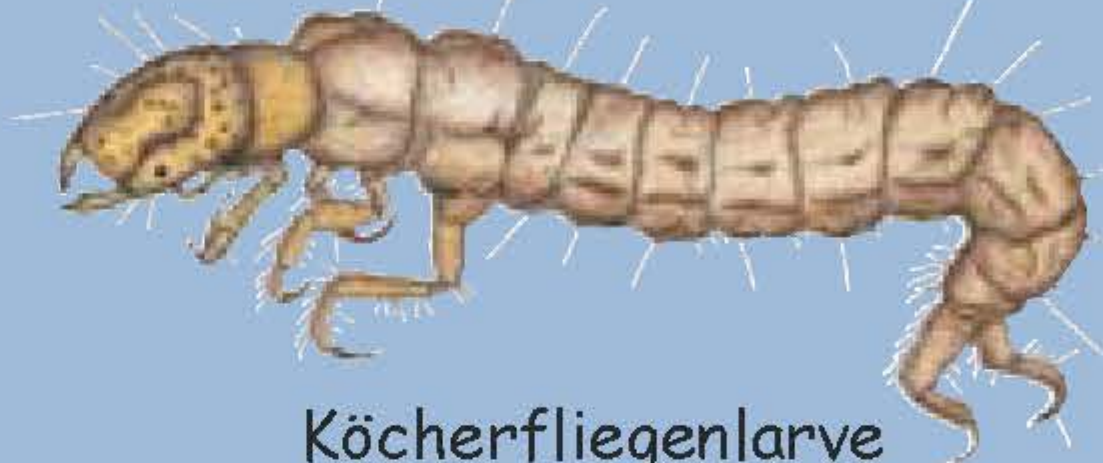
Steinfliegenlarve  
*Protonemoura*  
8-15 mm



Quellschnecke  
*Bythinella dunkeri*  
2,5 mm



Alpenstrudelwurm  
*Crenobia*  
16 mm



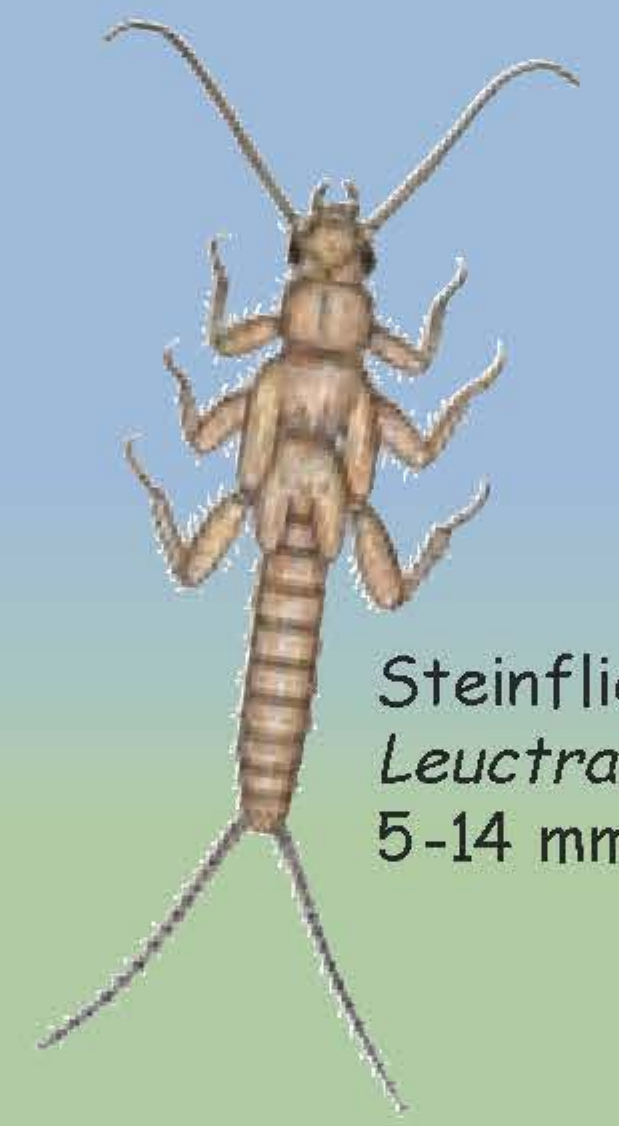
Köcherfliegenlarve  
*Plectrocnemia*  
22 mm



Köcherfliegenlarve  
*Agapetus*  
8 mm



Dreieckstrudelwurm  
*Dugesia gonocephala*  
25 mm



Steinfliegenlarve  
*Leuctra*  
5-14 mm



Sumpfkäferlarve  
*Elodes*  
10 mm



Steinfliegenlarve  
*Nemoura*  
6-13 mm



Hakenkäfer  
*Elmis*  
1,5-2,5 mm



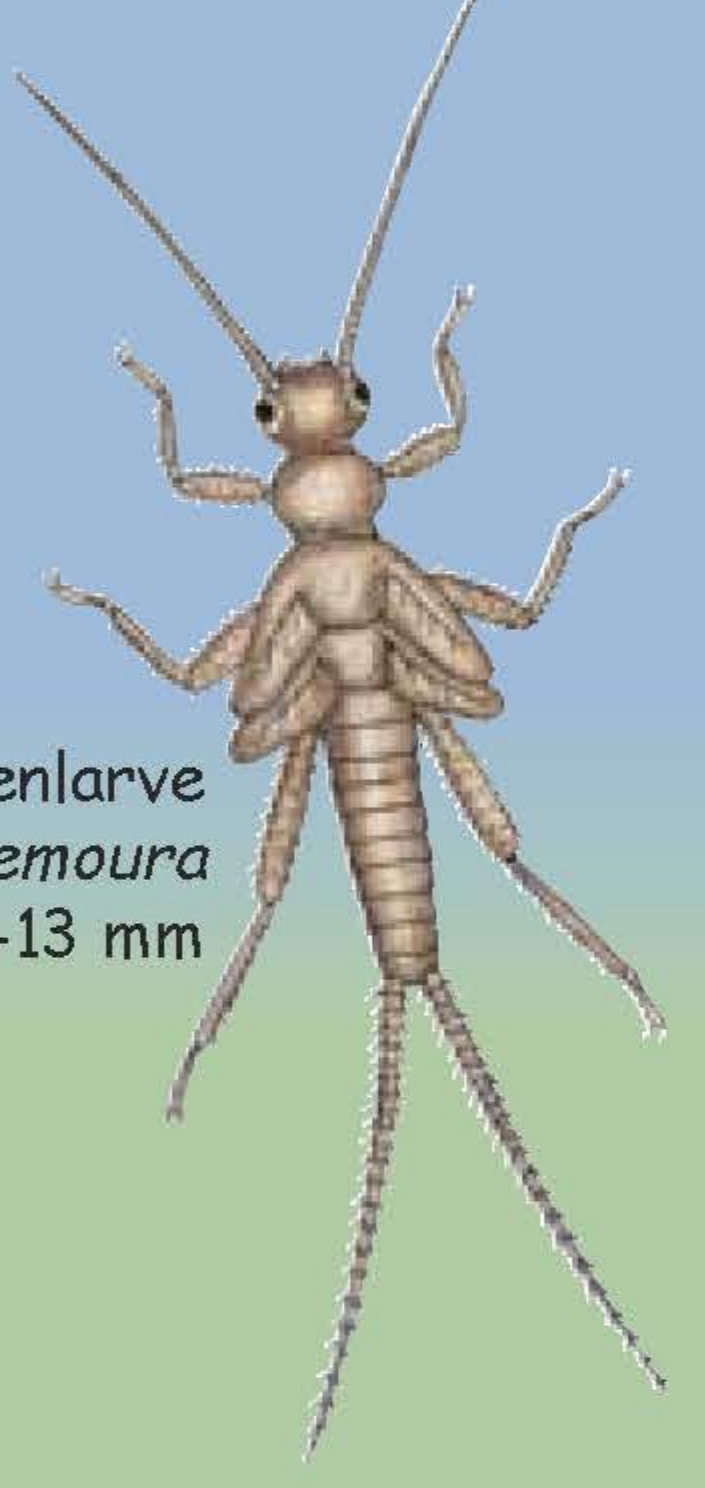
Flussschwimmschnecke  
*Theodoxus*  
8-13 mm



Bachflohkrebs  
*Gammarus fossarum*  
20-24 mm



Köcherfliegenlarve  
*Sericostoma*  
12-15 mm



Steinfliegenlarve  
*Nemoura*  
6-13 mm



Hakenkäfer  
*Elmis*  
1,5-2,5 mm

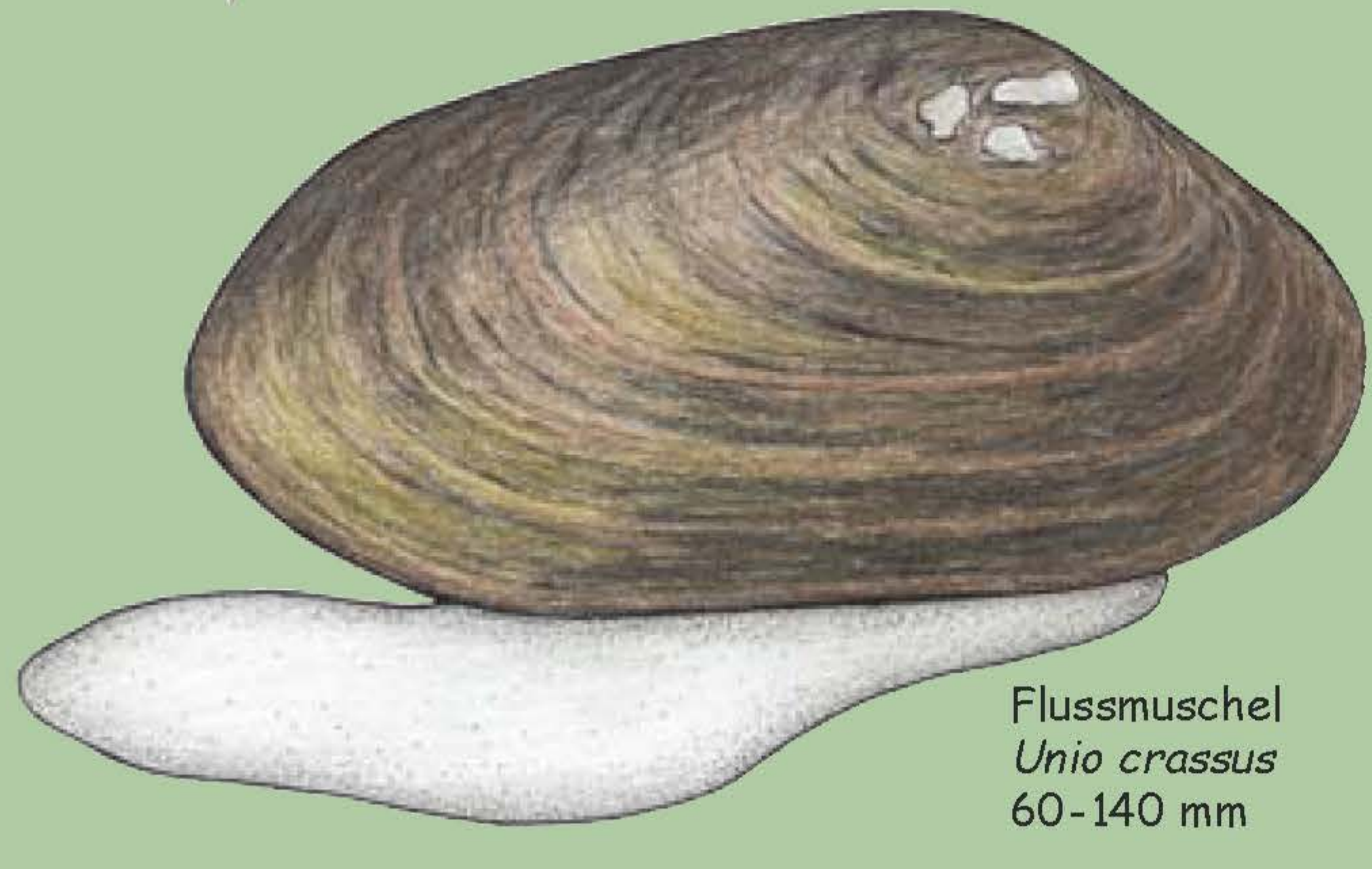


Dreieckstrudelwurm  
*Dugesia gonocephala*  
25 mm



Köcherfliegenlarve  
*Silo*  
10-12 mm

2



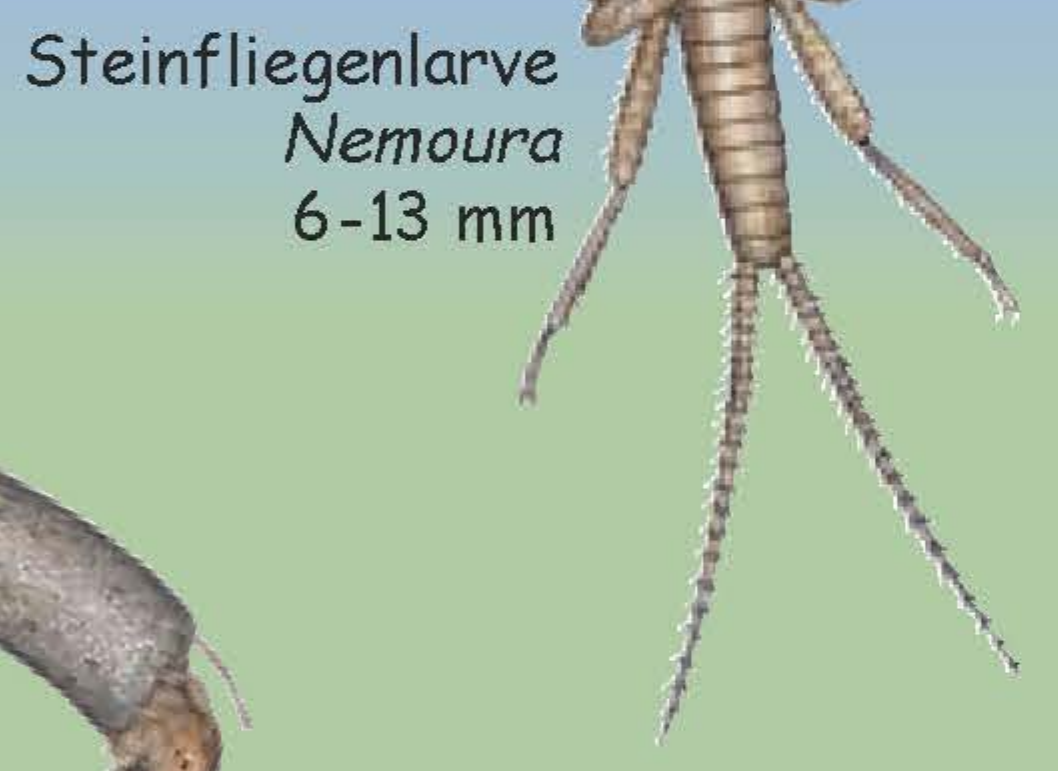
Flussmuschel  
*Unio crassus*  
60-140 mm



Bachflohkrebs  
*Gammarus fossarum*  
20-24 mm



Köcherfliegenlarve  
*Sericostoma*  
12-15 mm



Steinfliegenlarve  
*Nemoura*  
6-13 mm



Hakenkäfer  
*Elmis*  
1,5-2,5 mm



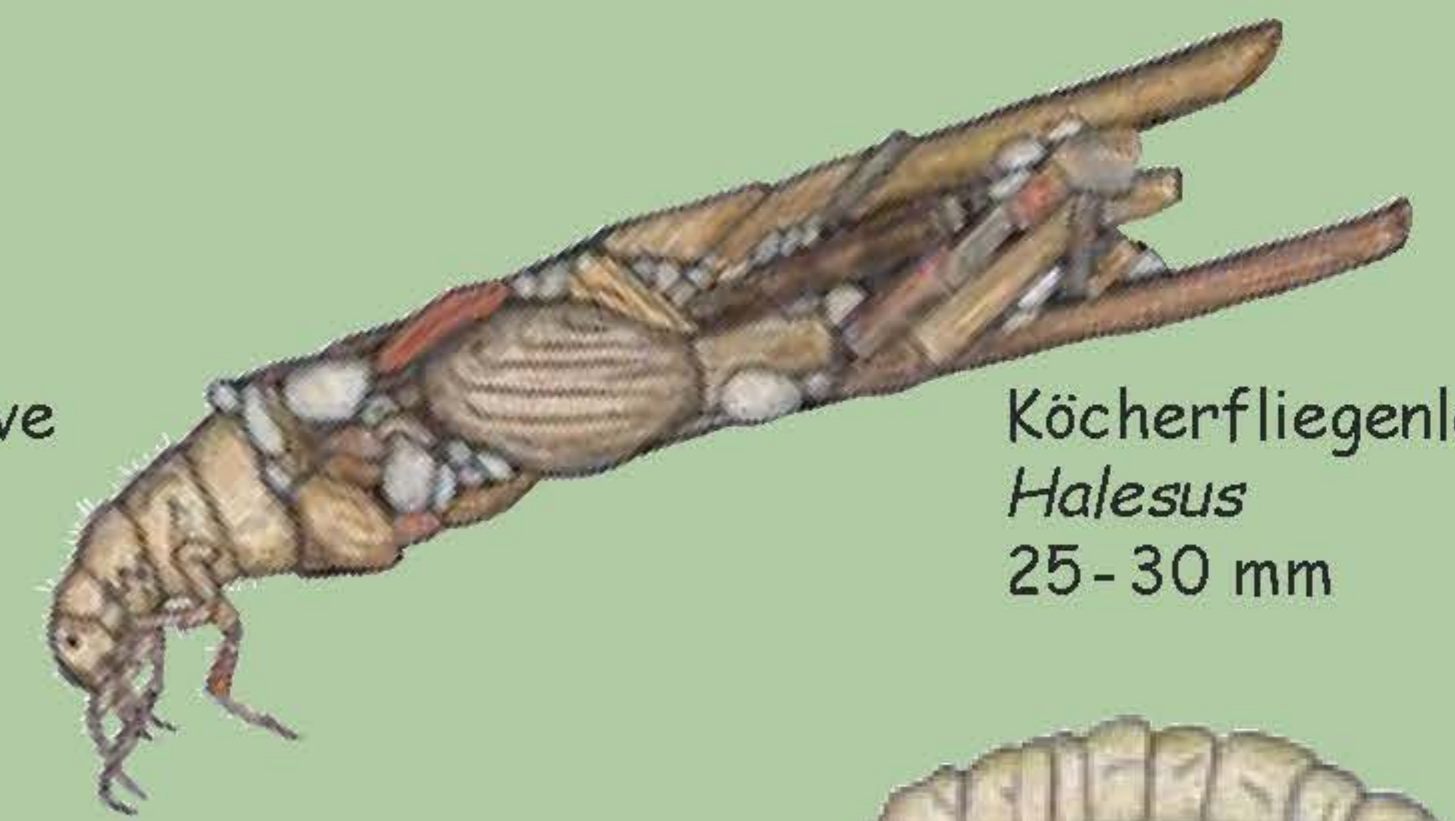
Dreieckstrudelwurm  
*Dugesia gonocephala*  
25 mm



Köcherfliegenlarve  
*Silo*  
10-12 mm



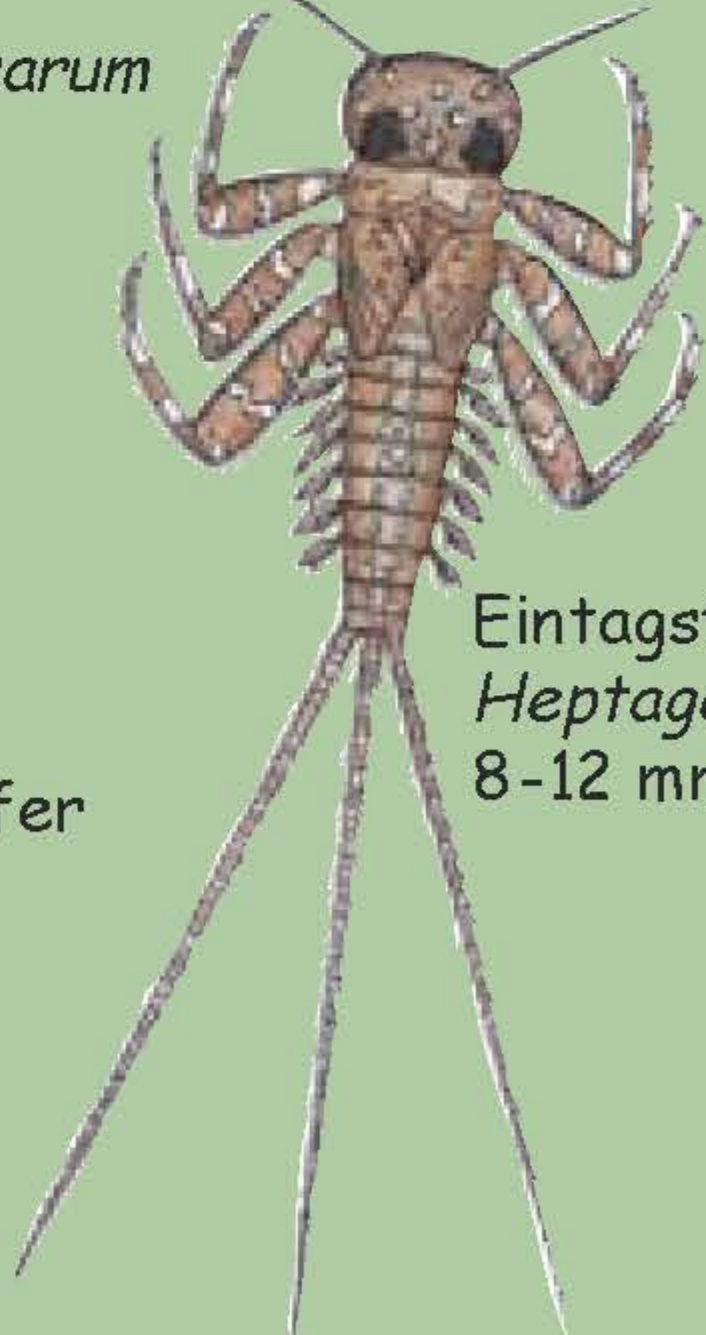
Eintagsfliegenlarve  
*Ephemera*  
30-45 mm



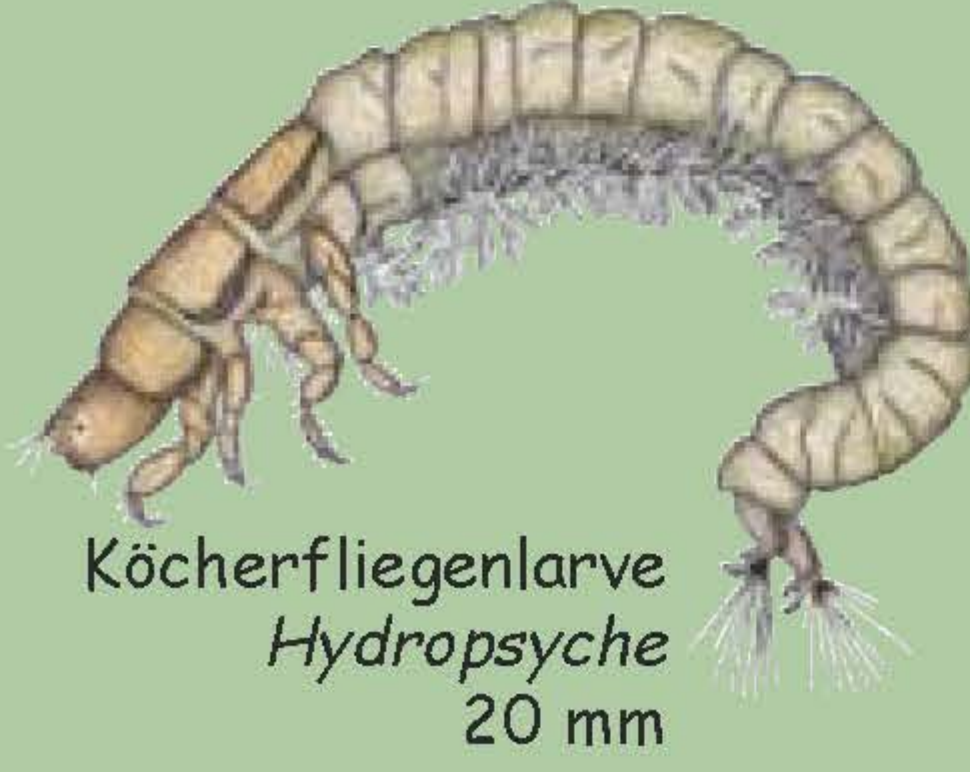
Köcherfliegenlarve  
*Halesus*  
25-30 mm



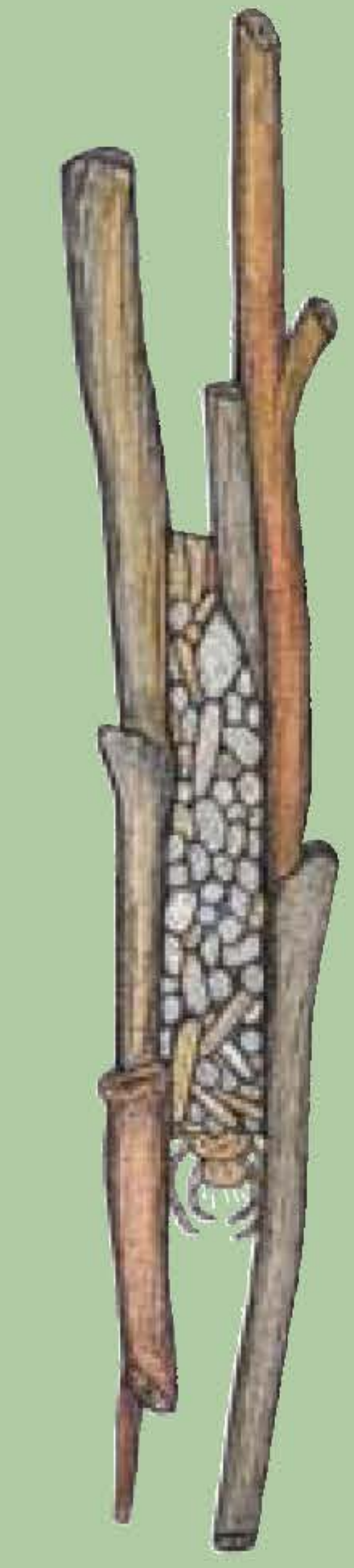
Bachtaumelkäfer  
*Orectochilus*  
7-8 mm



Eintagsfliegenlarve  
*Heptagenia*  
8-12 mm



Köcherfliegenlarve  
*Hydropsyche*  
20 mm



Köcherfliegenlarve  
*Anabolia*  
30-70 mm



Eintagsfliegenlarve  
*Ephemera*  
30-45 mm



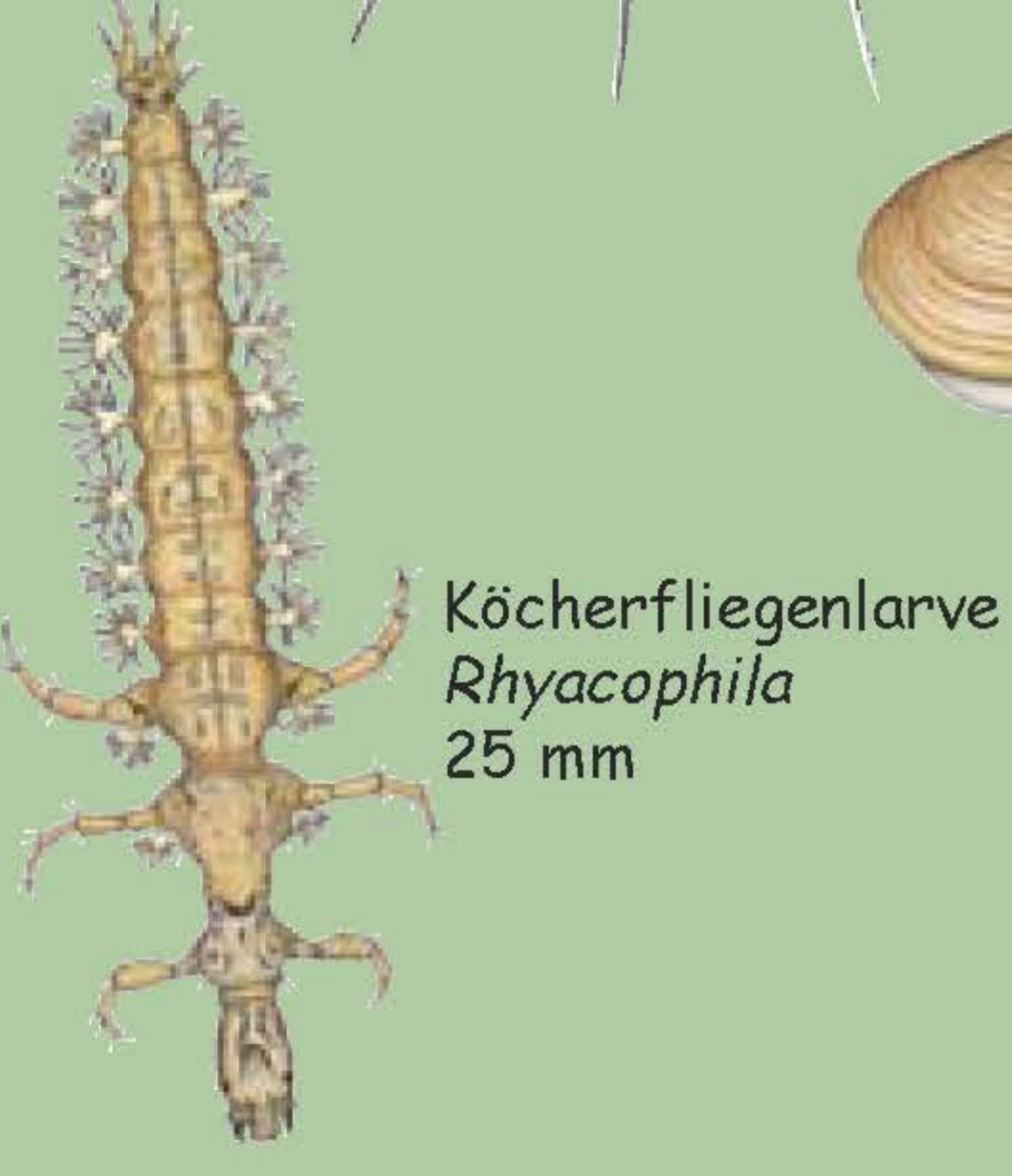
Prachtlibellenlarve  
*Calopteryx*  
26 mm



Flussschwimmschnecke  
*Theodoxus*  
8-13 mm



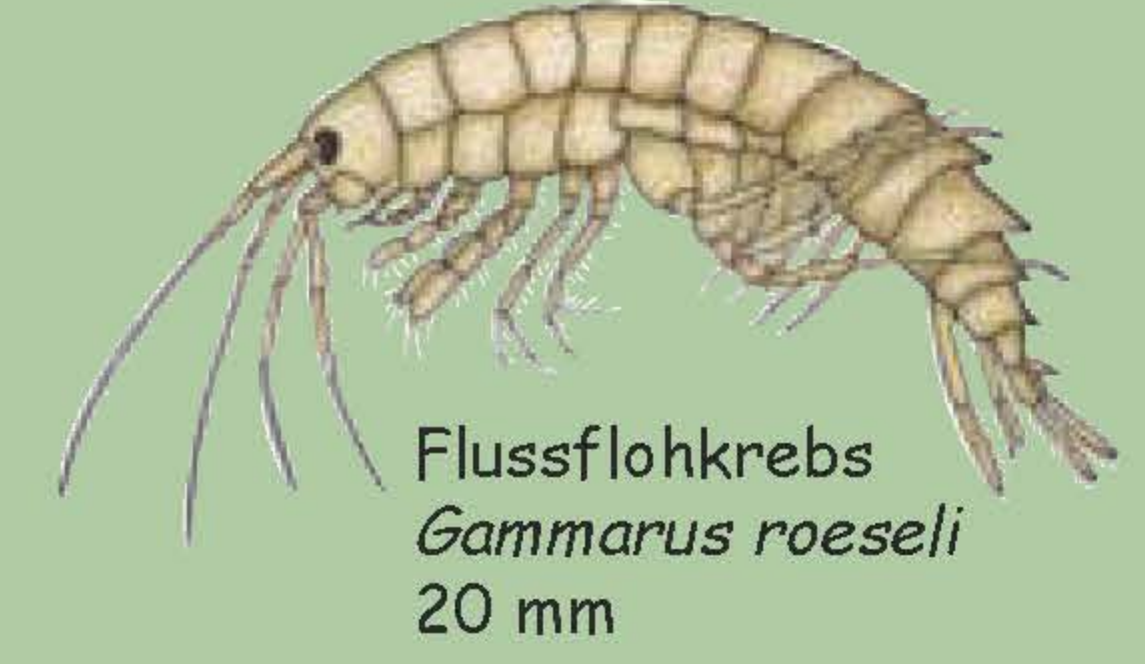
Schnepfenfliegenlarve  
*Atherix ibis*  
20 mm



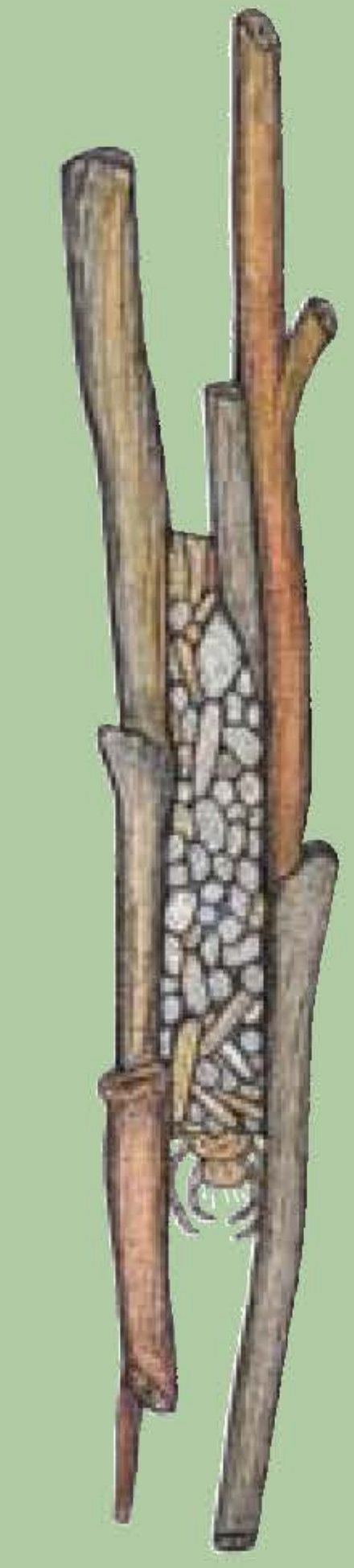
Köcherfliegenlarve  
*Rhyacophila*  
25 mm



Erbsenmuschel  
*Pisidium amnicum*  
8-11 mm



Flussflohkrebs  
*Gammarus roeseli*  
20 mm



Köcherfliegenlarve  
*Anabolia*  
30-70 mm

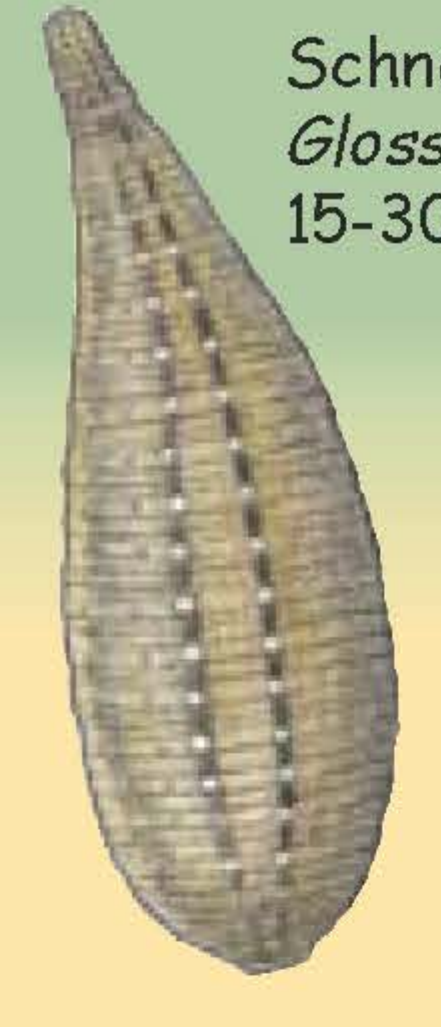


Eintagsfliegenlarve  
*Ephemera*  
30-45 mm



Prachtlibellenlarve  
*Calopteryx*  
26 mm

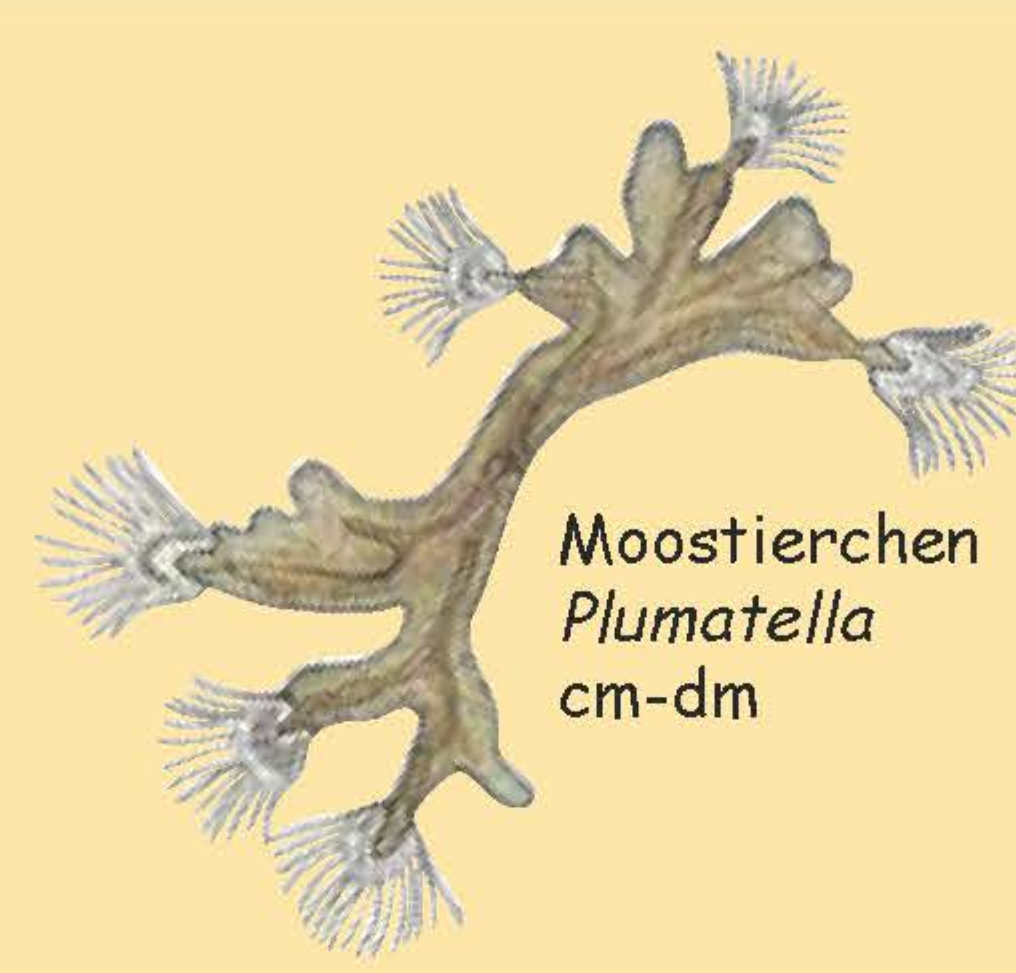
3



Schneckenegel  
*Glossiphonia complanata*  
15-30 mm



Kugelmuschel  
*Sphaerium*  
10-14 mm



Moostierchen  
*Plumatella*  
cm-dm



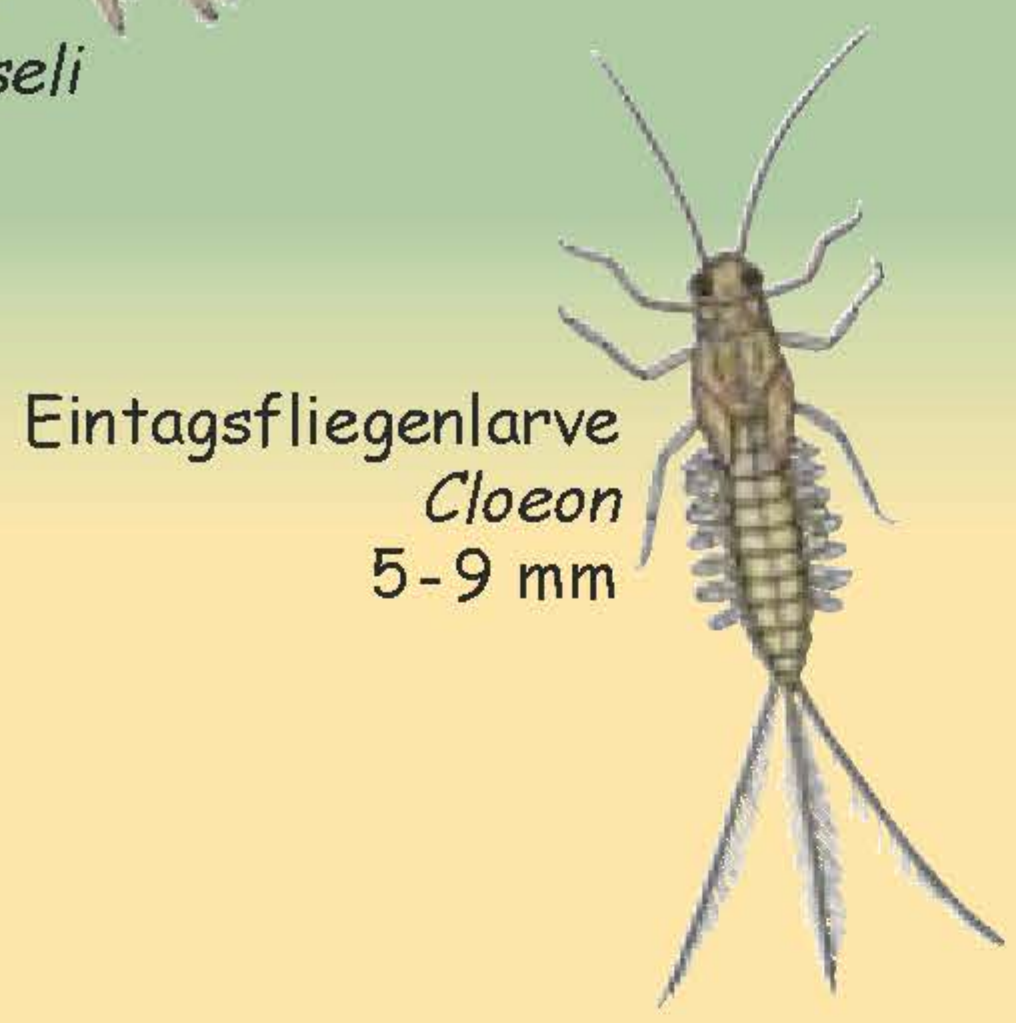
Schlammfliegenlarve  
*Sialis*  
20-40 mm



Schlammsschnecke  
*Radix*  
15-20 mm



Kriebelmückenlarve  
*Simulium*  
10 mm



Eintagsfliegenlarve  
*Cloeon*  
5-9 mm



Strudelwurm  
*Planaria torva*  
15-20 mm



Süßwasserschwamm  
*Ephydatia*  
cm-dm

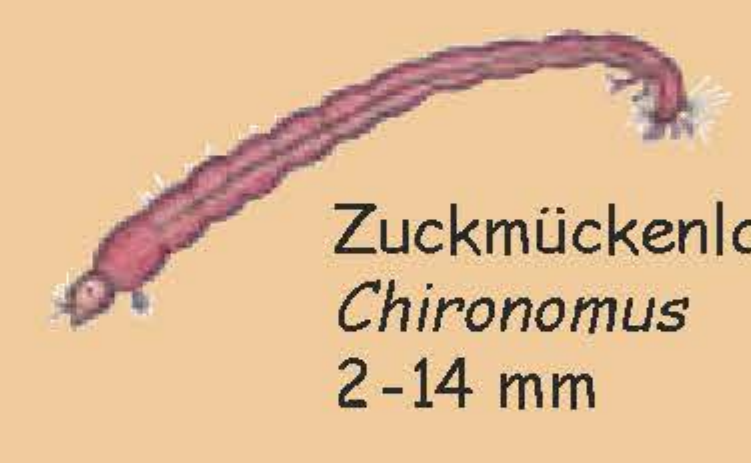


Wandermuschel  
*Dreissena*  
30-40 mm

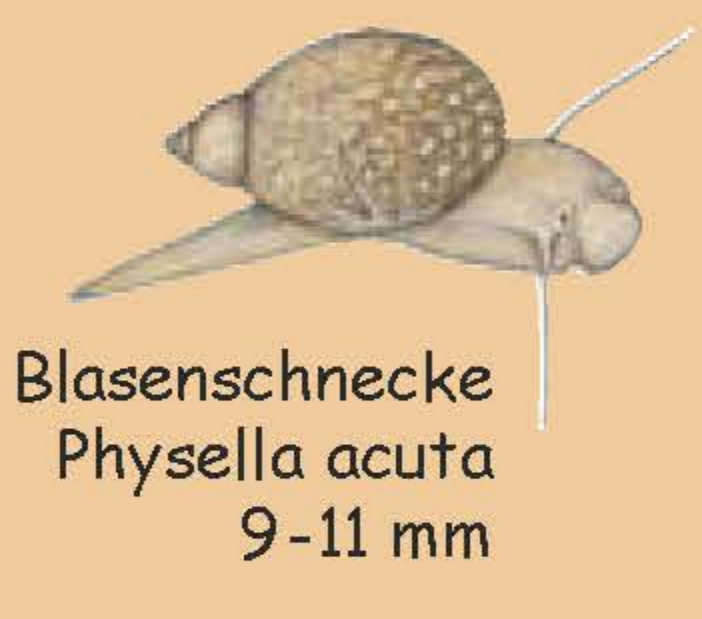
4



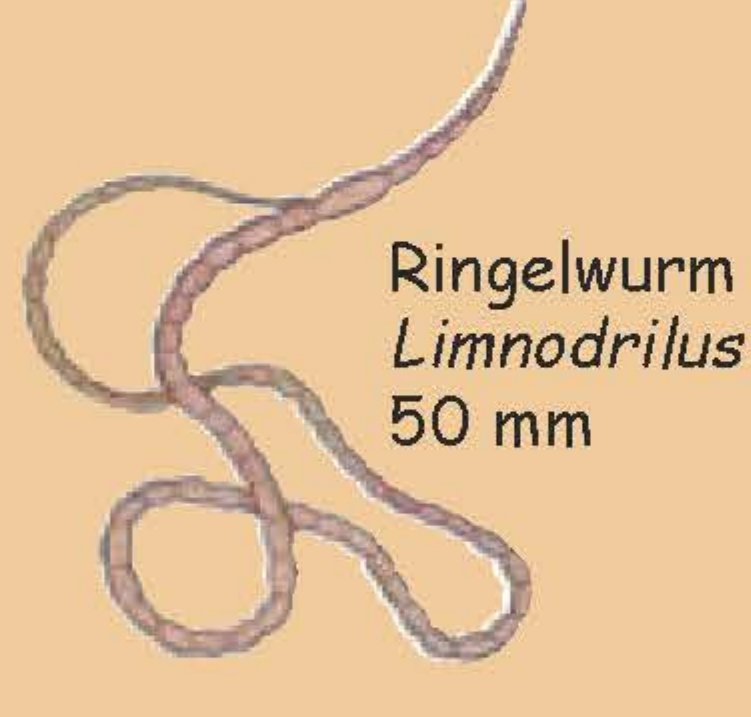
Wasserassel  
*Asellus*  
12 mm



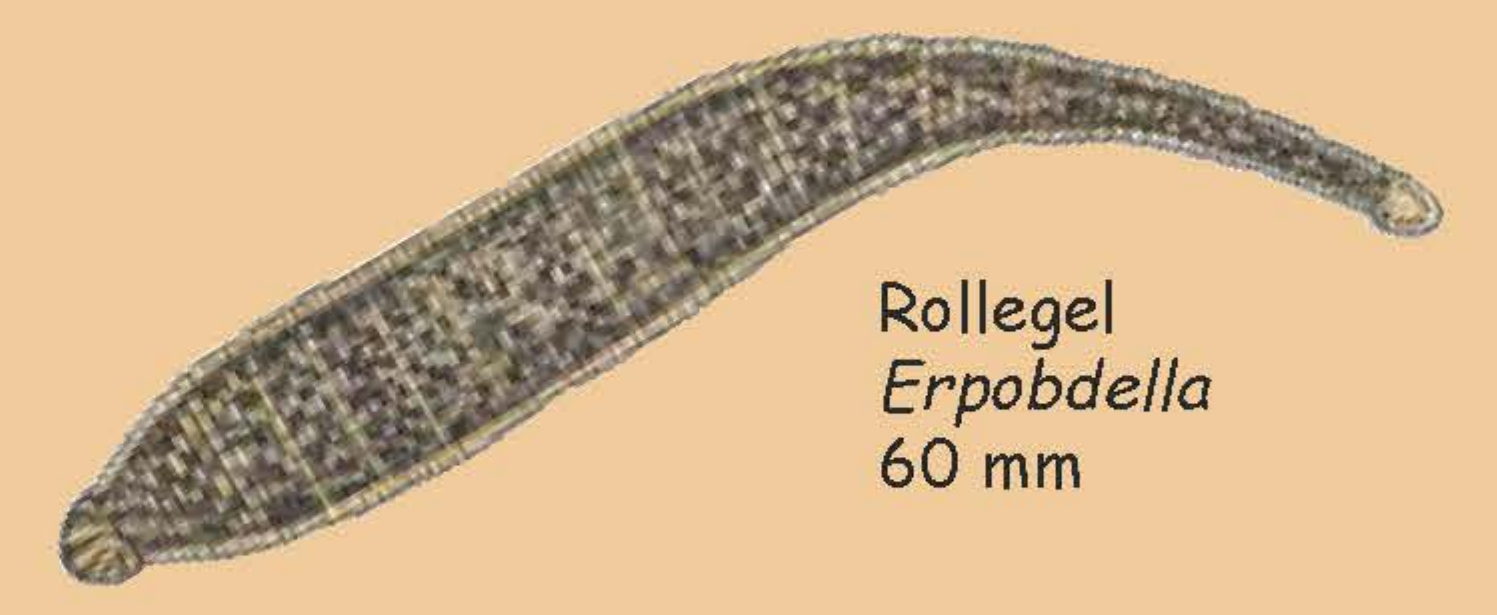
Zuckmückenlarve  
*Chironomus*  
2-14 mm



Blasenschnecke  
*Physella acuta*  
9-11 mm



Ringelwurm  
*Limnodrilus*  
50 mm

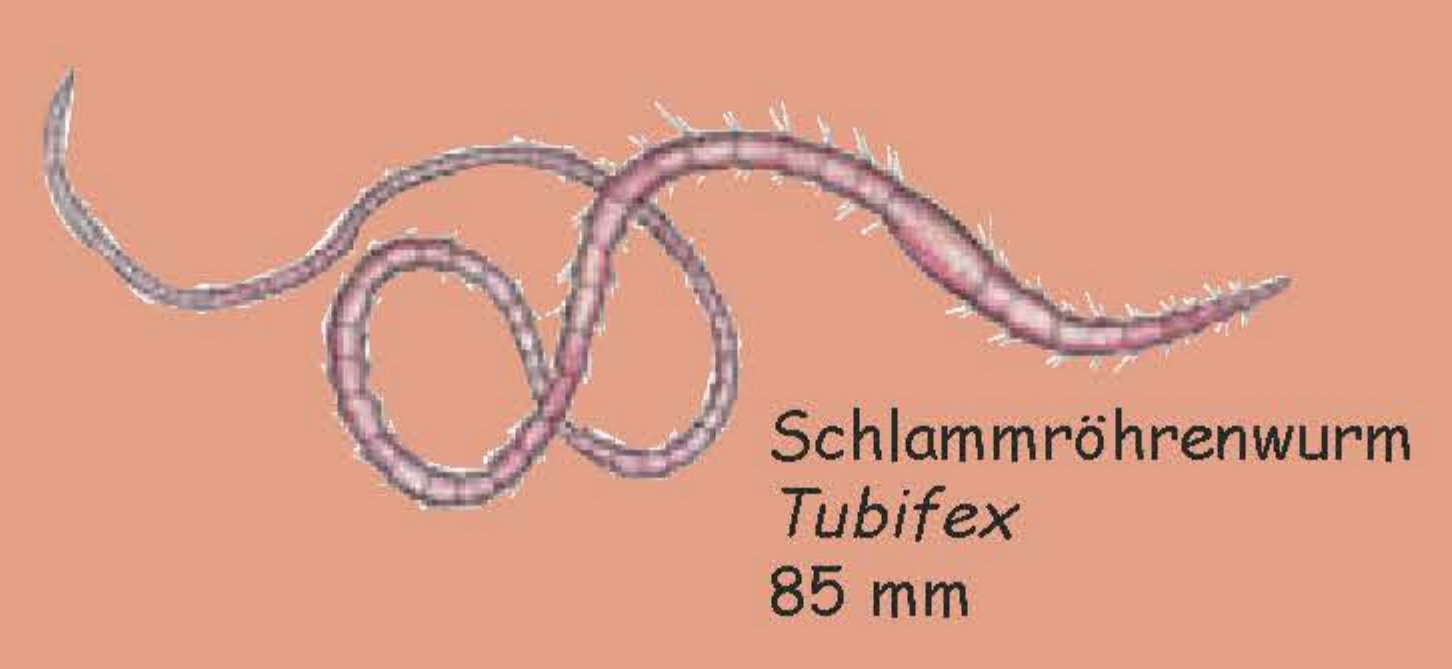


Rollegel  
*Erpobdella*  
60 mm



Teichegel  
*Helobdella stagnalis*  
5-10 mm

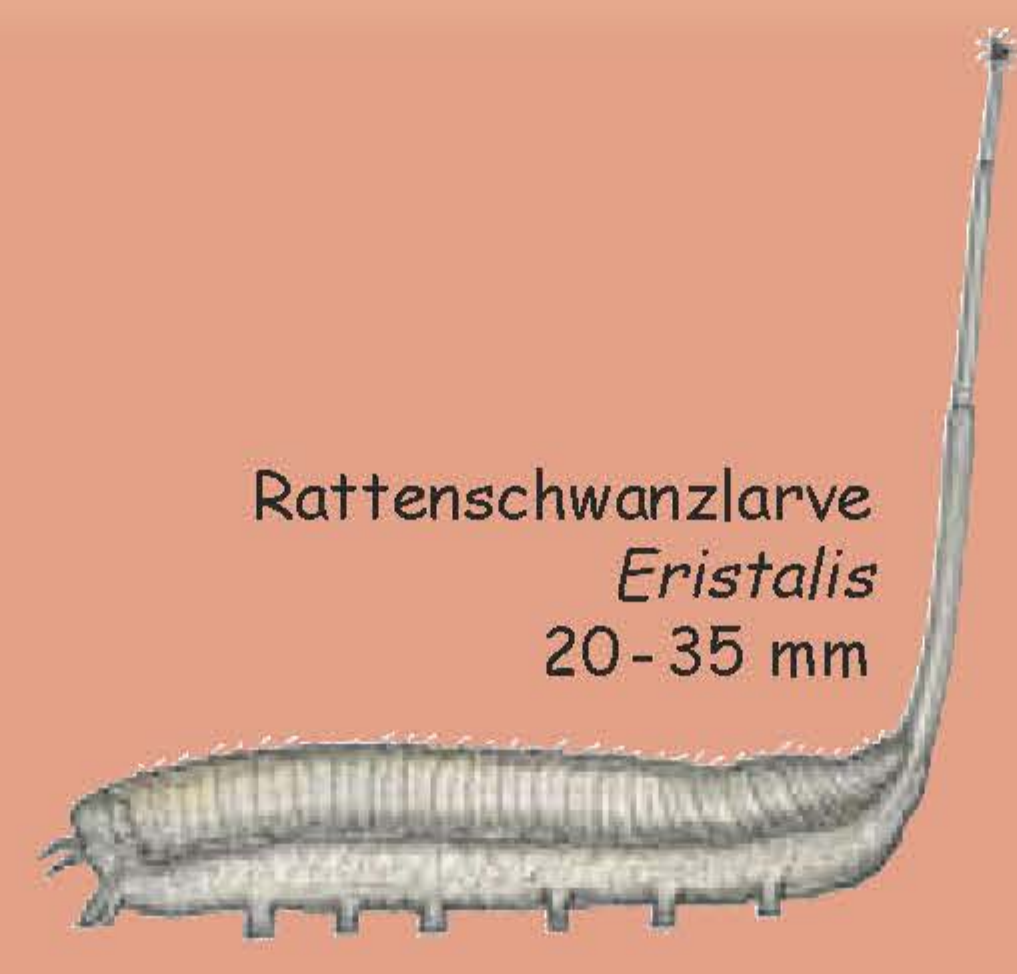
5



Schlammröhrenwurm  
*Tubifex*  
85 mm



Schmetterlingsmückenlarve  
*Psychoda*  
10-20 mm



Rattenschwanzlarve  
*Eristalis*  
20-35 mm

sehr gut

gut

mäßig

unbefriedigend

schlecht